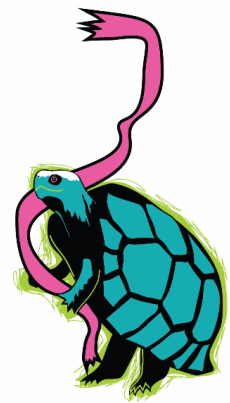


AthHalf 2025



The 9th Annual Athfest Educates 5K is October 11, 2025 !!!!!

We hope your training has been fantastic and you're ready to run because we're ready for you!
Below are 15 things we want you to know about the 2025 Athfest Educates 5K:

1. Race Date and Time

The Athfest Educates 5K begins promptly at 2:30 pm on Sat, October 11, 2025. *There will be NO race day registration and no bib transfers on race day.*

2. Race Packet Pick-up

Packet pick-up will be held on Sat, October 11, 2025 from 12:00 PM – 2:20 PM at the Health and Fitness Expo held at the Classic Center Pavilion located at 440 Foundry Street. All runners must wear their race bib to participate in the race. Please pin the bib to the FRONT of your person. There will be NO bib transfers made on race day. All transfers must be made prior to Oct 8, 2025 using RunSignup.

3. Race T-Shirt Pick-up

At the Expo, all participants will be given the shirt size that they ordered at registration. If the shirt ordered is too large or too small, after the race you may visit the t-shirt table and ask to swap out your shirt. If we have extra shirts available, we will gladly swap sizes.

4. AthHalf 5K Route

The AthHalf 5K course is an out-and-back course starting and finishing in front of the Classic Center Pavilion, located at 440 Foundry St. in downtown Athens, Georgia. The full course, elevation map, and turn-by-turn directions can be downloaded at:
<https://athhalf.com/5k/>

5. Parking

There are many different places to park for the 5K including the Classic Center Parking Deck located at 705 E. Broad Street and the College Avenue Parking Garage located at 287 College Avenue. Metered street parking is also available throughout downtown Athens.

6. Race Time

The race begins promptly at 2:30 pm and runners will have one hour to complete the course. A sweeper will be at the back of the race wearing balloons! Runners that are falling behind pace to finish the race by 3:30pm will be asked to move to the sidewalk to complete the course as race amenities (i.e. water and police) will be discontinued at 3:30 pm. The Finish Line will close at 3:30pm

7. Water Station

There will be one water station on the 5K course, located at the half-way point, which is at the turn around for the 5K course.

8. Strollers and Pets

The AthHalf 5K is a family-friendly race and runners are encouraged to run with family and friends. The AthHalf 5K does permit strollers during the race. And we know for some folks, their pets are family. Your pets are welcome to join you ONLY if they are in pet strollers. Pet leashes are safety hazards for runners and will NOT be permitted on the course.

9. Hospitality and Celebration Area

The runner celebration area will be located at the Classic Center Pavilion at the end of the course. Cross the finish line and come celebrate with live music, refreshments, and snacks! Family and friends are more than welcome, but please ask them to refrain from eating or drinking the refreshments. We want all runners, from the first to the last, to be able to enjoy the same refreshments!

10. Awards Ceremony

The awards ceremony will begin at 3:15 pm on the stage at the Classic Center Pavilion. Overall, Masters and Age Group winners will receive awards.

11. Race Results

Race Results will be available on RunSignup shortly after the race ends. Final race results will be posted on the AthHalf website under “The Race” tab after the race.

12. Race Benefactors

The AthHalf 5K is proudly produced by the nonprofit AthFest Educates and all proceeds from the AthHalf 5K go directly toward our mission of supporting high-quality music and arts education for the young people of Athens-Clarke County. To date, AthFest Educates has awarded over \$685,000 in grants to local schools, nonprofits, and government programs to support music and arts for young people. Thank you for helping us advance the quality and quantity of music and arts education in our community.

13. Additional Questions

If you have additional questions about the 5K, please feel free to e-mail us at: race@athfesteducates.org or check out our FAQ page at: <http://athhalf.com/athhalf-questions>

14. Stay Connected

Follow the AthHalf Half Marathon & 5K on Facebook, Twitter, and Instagram, and the athhalf.com website, to stay up-to-date on race and runner details!

Have a great race!